

Onslow County, NC, Economic Conditions

October 9, 2009

William W. Hall, Jr.

Senior Economist

H. David and Diane Swain Center for Business and Economic Services

Cameron School of Business

UNC Wilmington

hall@uncw.edu



Onslow County, NC, Demographics

Characteristic	Value
Population	
Population (2008)	161,736
2008 Median Age	26
Income	
Per Capita (2008)	\$19,613
Median Household Income (2008)	\$44,762
Education	
High School Graduates(2008)	72,580
% of Population 25 years +	86.7
College Graduates (2008)	13,303
% of Population 25 years +	15.9

Source: NC Department of Commerce – Policy, Research, and Strategic Planning Division.

County Demographics cont.

Characteristic	Value
Health Care Providers	
Physicians (2007)	124
Per 10,000 Population	7.3
RNs per 10,000 Population (2007)	46.5
Dentists per 10,000 Population (2007)	3
Pharmacists per 10,000 Population (2007)	3.7
Housing	
Total Units(2008)	61,935
Owner-Occupied (2008)	30,089 (49%)
Renter-Occupied (2008)	22,324 (36%)
Median Value Owner-Occupied (2008)	\$134,700

Source: NC Department of Commerce – Policy, Research, and Strategic Planning Division.

1Q09 Employment and Wages

Sector	% of Total	Average Weekly Wage	
	Employment	Wage	% of All-Sector Average
Retail Trade	20.1	\$418	78.5
Local Government	15.2	\$699	131.3
Accom/Food Services (<i>Lowest Wage</i>)	13.9	\$233	43.8
Federal Government	13.0	\$754	141.5
Educational Services	12.0	\$669	125.5
Health Care/Soc Assist	11.7	\$600	112.6
Public Administration	9.4	\$900	168.9
Adm/Waste Services	7.3	\$443	83.2
Construction	6.0	\$549	102.9
Utilities (<i>Highest Wage</i>)	0.8	\$985	184.8
All Sectors		\$533	

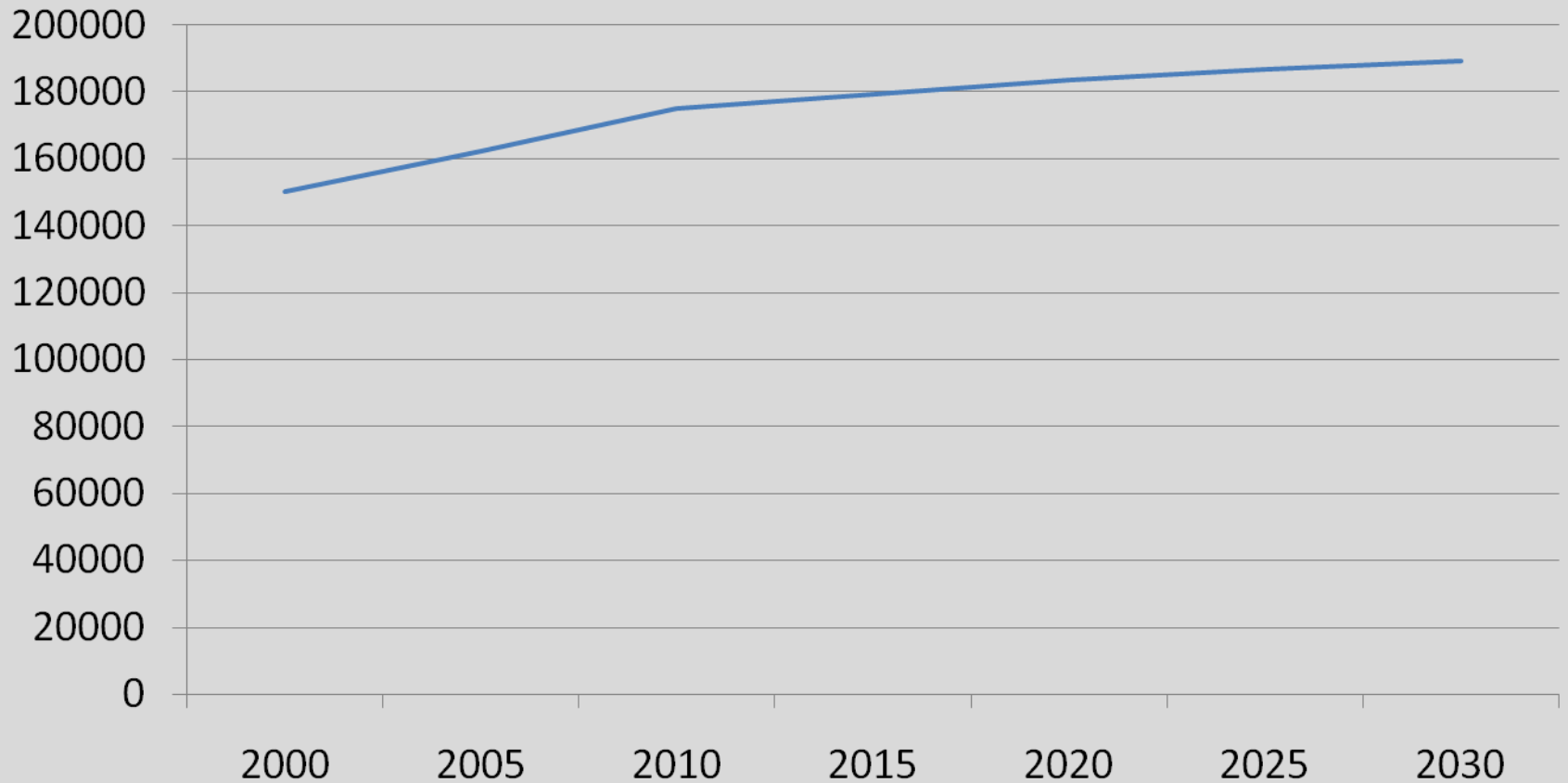
Source: NC Employment Security Commission.

Population Trends

Age	2000	% of Total Pop	2005	% of Total Pop	% Ch 2000-05	2010	% of Total Pop	% Ch 2005-10	2015	% of Total Pop	% Ch 2010-15	% Ch 2005-15
0-4	13,288	8.8	13,521	8.3	1.8	15,001	8.6	10.9	15,447	8.6	3.0	14.2
5-14	20,448	13.6	20,323	12.5	-0.6	20,440	11.7	0.6	21,810	12.2	6.7	7.3
15-24	41,461	<u>27.6</u>	51,721	<u>31.8</u>	<u>24.7</u>	55,239	<u>31.6</u>	6.8	54,244	<u>30.2</u>	-1.8	4.9
25-34	23,762	15.8	22,160	13.6	-6.7	24,722	14.1	11.6	26,641	14.9	7.8	20.2
35-44	20,206	13.4	17,616	10.8	<u>-12.8</u>	15,789	9.0	<u>-10.4</u>	14,972	8.3	-5.2	<u>-15.0</u>
45-54	12,971	8.6	15,443	9.5	19.0	16,782	9.6	8.7	14,684	8.2	<u>-12.5</u>	-4.9
55-64	8,720	5.8	10,461	6.4	20.0	13,506	7.7	<u>29.1</u>	15,568	8.7	15.3	<u>48.8</u>
65-74	6,010	4.0	6,973	4.3	16.0	8,152	4.7	16.9	9,746	5.4	<u>19.6</u>	39.8
75 & Over	3,489	2.3	4,278	2.6	22.6	5,322	3.0	24.4	6,286	3.5	18.1	46.9
Total	150,355		162,496		8.1	174,953		7.7	179,398		2.5	10.4

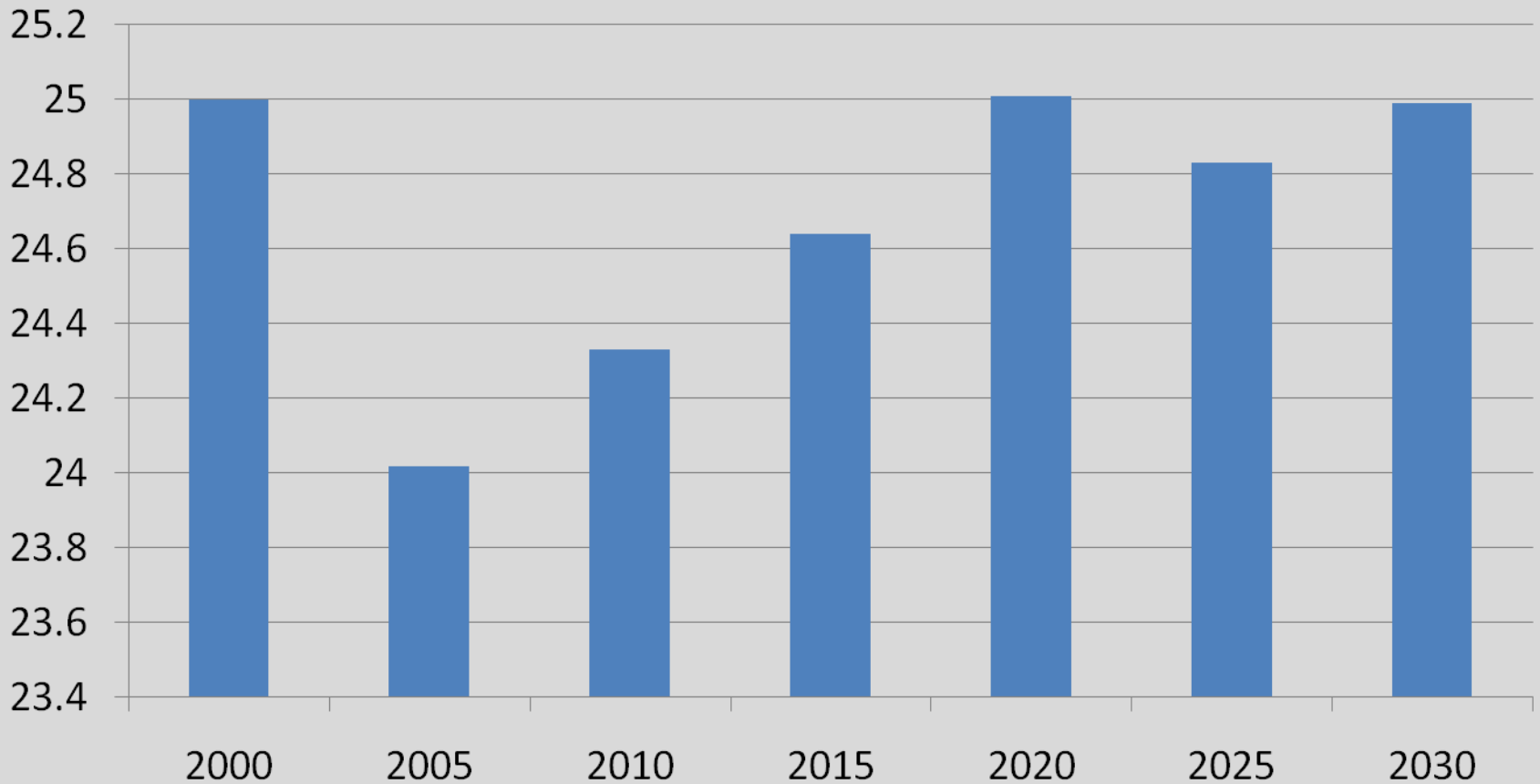
Source: Bureau of the Census, US Department of Commerce.

Population Forecast



Source: Bureau of the Census, US Department of Commerce.

Population Median Age



Source: Bureau of the Census, US Department of Commerce.

2007 Military Impact in Eastern North Carolina

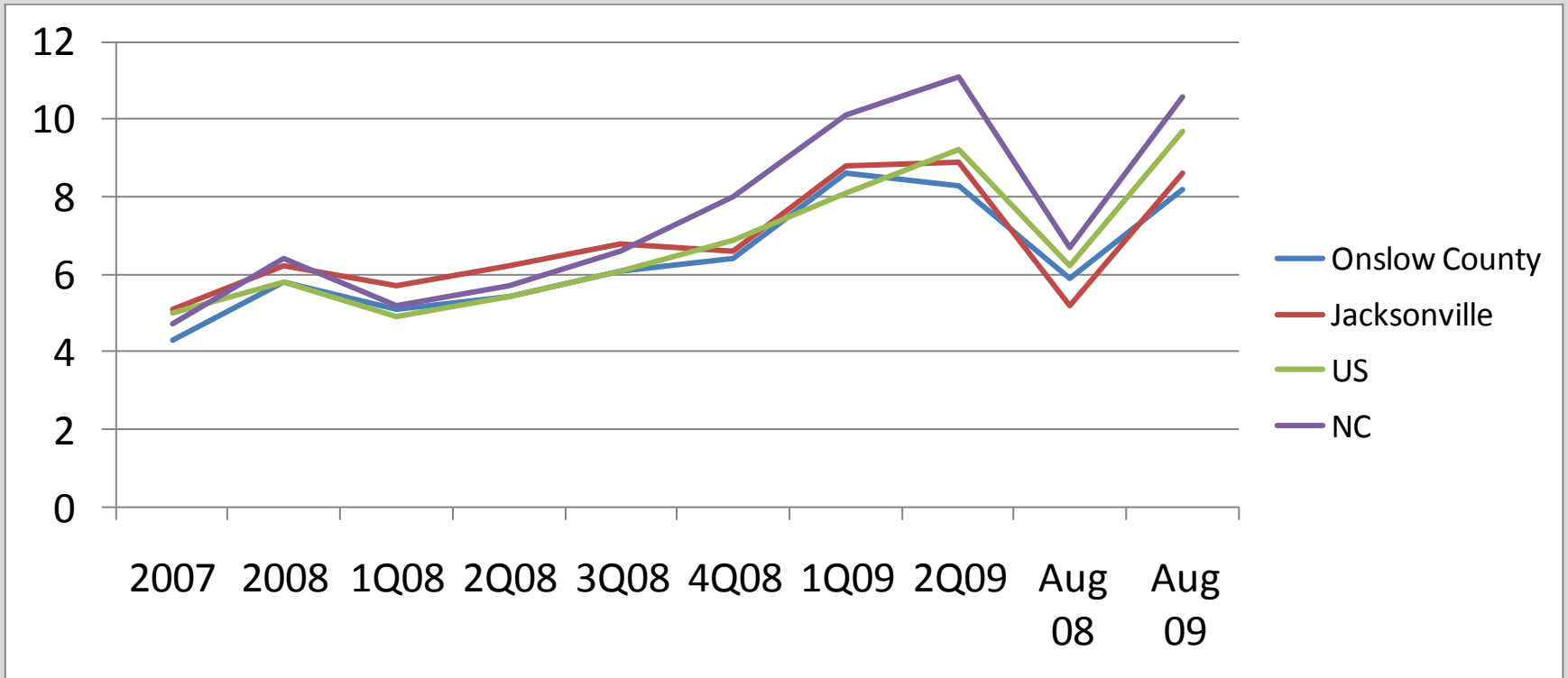
Impact	Value
Employment	152,800
Gross Regional Product	\$7.9 billion
Real (Inflation-Adjusted) Disposable (After Tax) Personal Income	\$5.5 billion

Source: NC Department of Commerce.

Impacts of Military Growth

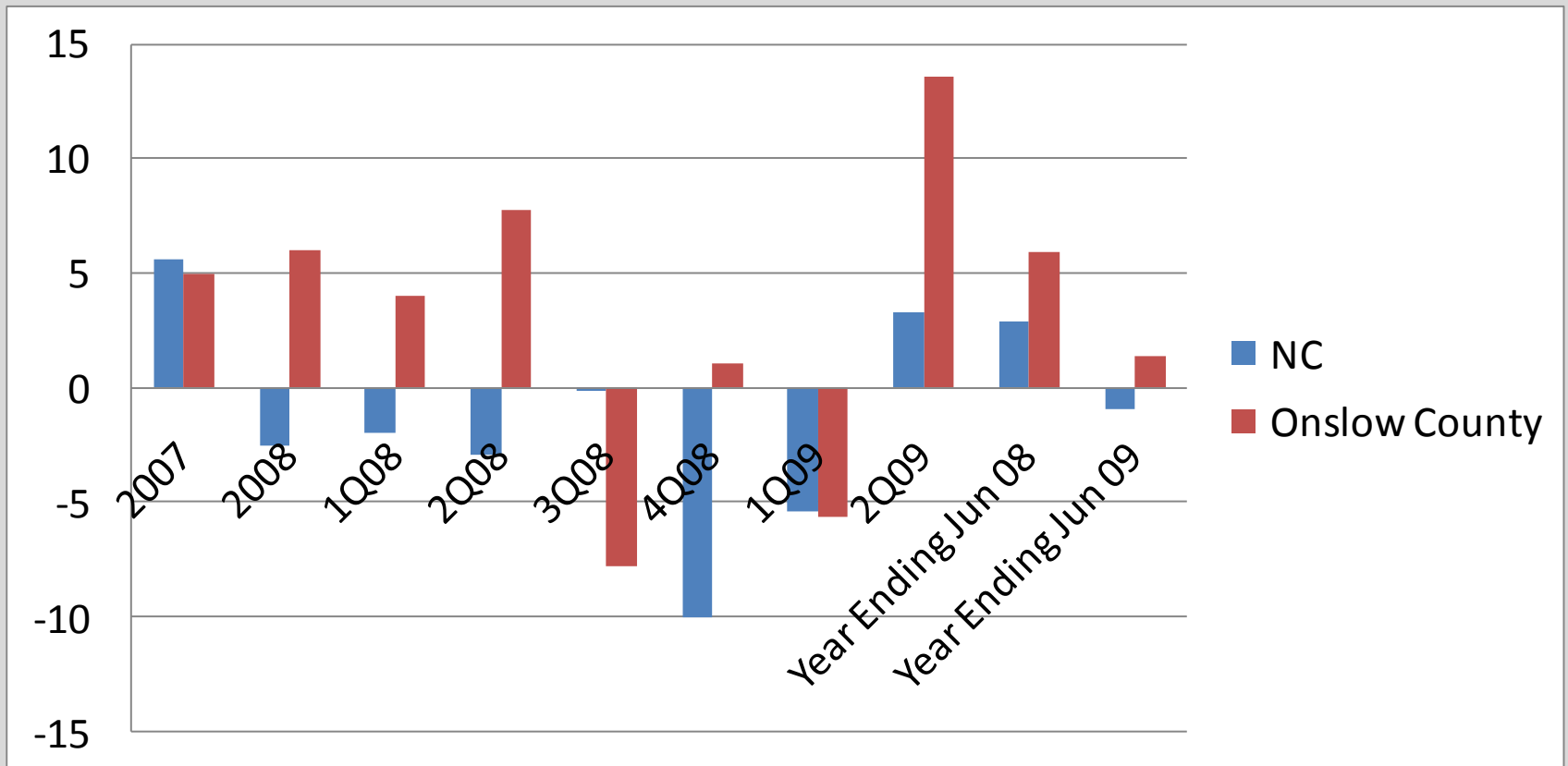
- An additional 1,500 Marines, Navy, and civilian workers at Camp Lejeune and associated air stations by 2012
- An additional \$3.8 billion in military construction in eastern North Carolina by 2013
- An additional 28,000 jobs due to military growth in eastern North Carolina by 2013
- As a result of military growth, annual real (inflation-adjusted) disposable (after tax) per capita personal income in eastern North Carolina is expected to rise by \$183 by 2013.

Unemployment Rates (%)



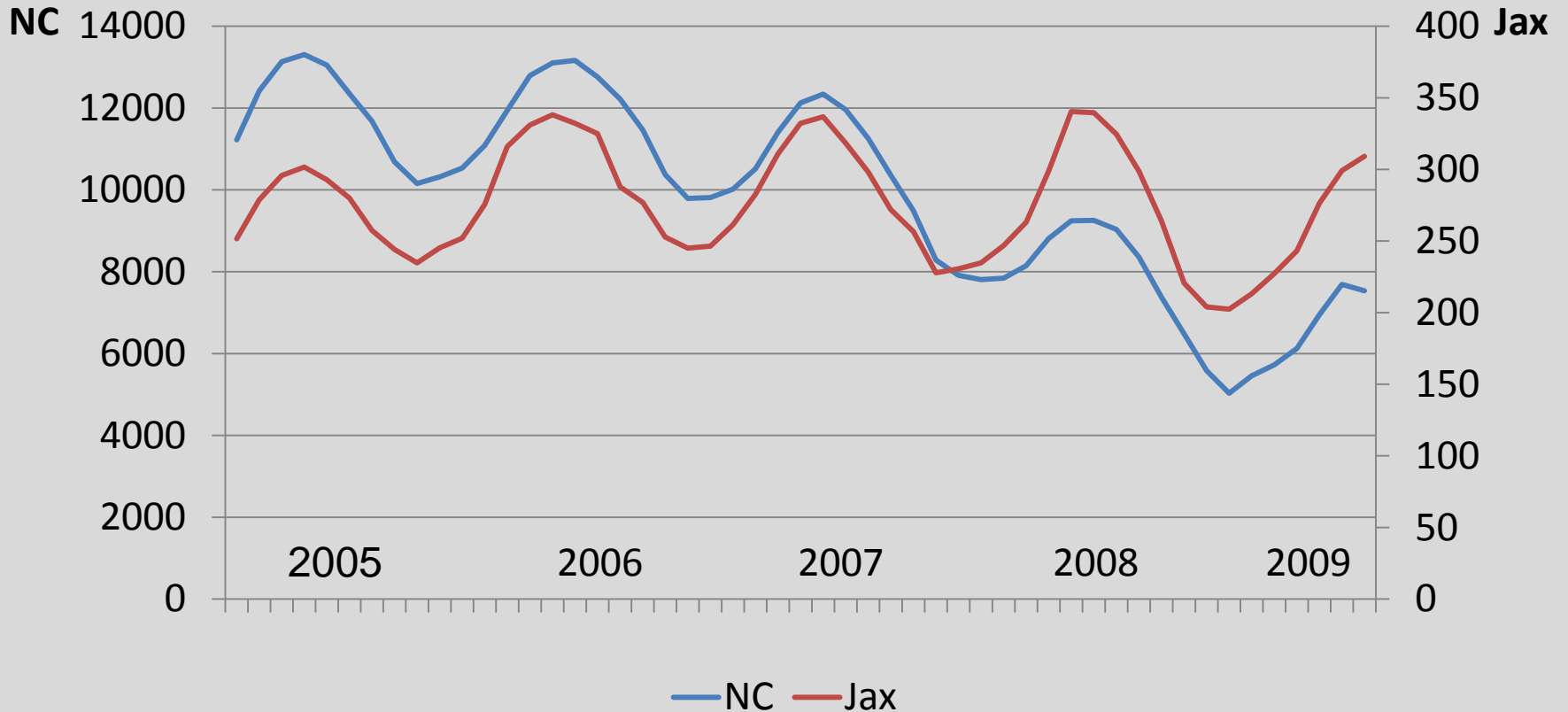
Source: NC Employment Security Commission; Bureau of Labor Statistics, US Department of Labor.

Retail Sales Growth Rates (%)



Source: NC Department of Revenue.

Sales of Existing Single-Family Structures Early 2005- Mid 2009 (5-Month Centered Moving Average)



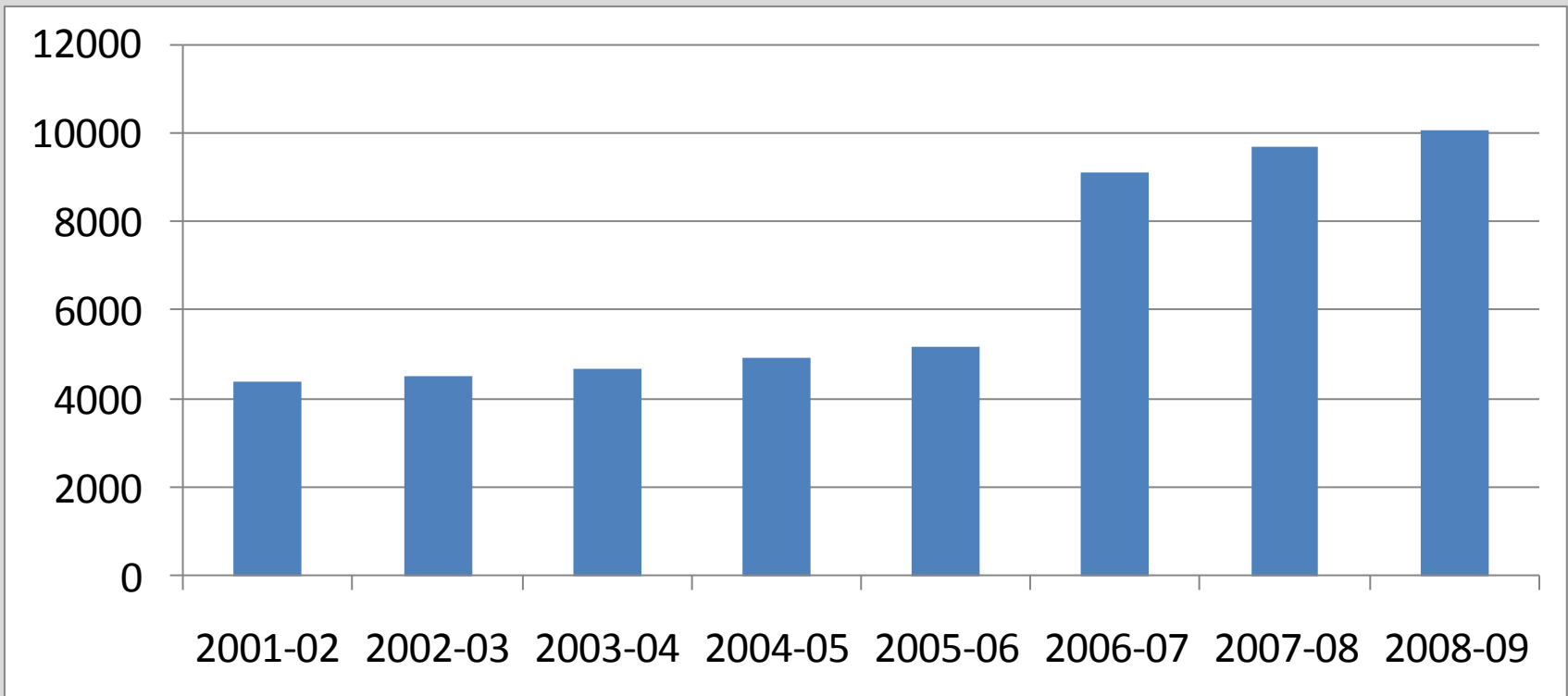
Source: NC Association of Realtors.

Onslow County, NC, Income

Year	Total Personal Income		Per Capita Personal Income (\$)			
	(\$ Millions)	% Ch	Amount	% of State (Rank)	% Ch	% of Nation
2000	\$3,437.2	29.4	\$22,820	84 (55)	26.5	76
2001	\$3,607.6	5.0	\$23,970	87 (40)	5.0	78
2002	\$3,580.3	-.7	\$23,255	84 (51)	-3.0	75
2003	\$3,871.0	8.1	\$24,670	88(36)	6.1	78
2004	\$4,338.2	12.1	\$26,752	91 (29)	8.4	81
2005	\$4,894.6	12.8	\$30,619	100 (15)	14.5	88
2006	\$5,173.7	5.7	\$31,942	99 (17)	4.3	87
2007	\$5,753.0	11.1	\$35,222	104(13)	10.2	91

Source: Bureau of Economic Analysis, US Department of Commerce.

Taxable Real Property (\$ Millions)



Source: NC Department of Revenue.

ARRA Stimulus Funding

8-18-09

Area	Amount (\$)	Area	Amount (\$)
Federal Depts (Grants)	\$57,427,000	Education Stabilization	\$880,988
Local School Districts	\$9,095,449	Energy Conservation	\$781,600
SSI	\$4,908,750	Work Force Investment	\$425,687
Drinking Water	\$4,229,950	Public Housing	\$413,028
0% School Bonds	\$2,874,206	Com Services (Grants)	\$380,813
Transit	\$1,762,934	House/Community Dev	\$138,351
Unemployment Insurance Payments	\$1,606,835	School Lunch Development	\$43,315
Food Stamps	\$1,208,916	Justice/Public Safety	\$5,025
Weatherization	\$1,095,349	Total	\$87,278,196

Source: NCRecovery.com.